

**GRANDVIEW LODGE\*NISSWA, MN**

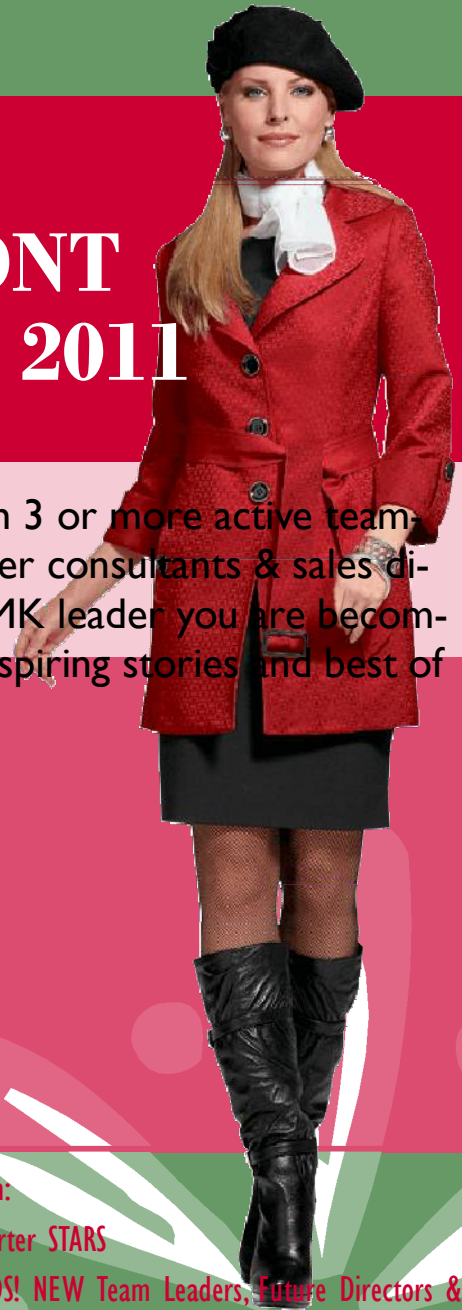
**SEPTEMBER 24-25 2011**

# **FUTURE DEGRAMMONT AREA RED ADVANCE 2011**

Promote yourself to RED today with 3 or more active teammates and join your Future Area sister consultants & sales directors for a weekend honoring the MK leader you are becoming! We will have fantastic training, inspiring stories and best of all-fun!

Arrive Saturday, Sept. 24, 1pm  
Depart Sunday, Sept. 25 at 12pm

Cost: \$70 prior to August 1st.  
\$80 August 1-September 8  
No cancellations after September 8



**Special Info:**

- \*DIQs are invited for DIRECTOR DAY beginning at 1pm on Friday.
- \*Bring a notebook, camera, pillow, beverages for yourself and a snack to share.
- \*Rate includes lodging, Sat night dinner and Sunday breakfast.
- \*Directions to Grandview: [www.grandviewlodge.com](http://www.grandviewlodge.com)

**Recognition:**

- \*First Quarter STARS
- \*NEW REDS! NEW Team Leaders, Future Directors & DIQs From 7/1-9/24,
- \*MKE Way To Grow Challenge
- \*Be a Power Player: 15 faces in 2 out of 3 months-

**SEPTEMBER 8-LAST DAY TO  
REGISTER FOR THE 2011  
ADVANCE!**

**waytoGROW**  
July 1 – Nov. 30, 2011

**BE A POWER PLAYER BY SEEING  
15 FACES 2 OUT OF 3 MONTHS**

**waytoGROW**  
July 1 – Nov. 30, 2011

# POWER PLAYERS TRACKING FORM

**DUE TO YOUR SALES DIRECTOR AT THE RETREAT**

<u>Name of Customer</u>	**Use an asterisk to denote new miracle set customer!		
	<u>July - 15 Faces</u>	<u>August 15 Faces</u>	<u>September 15 Faces</u>
1			
2			
3			
4			
5			
6			
7			
8			
9			
10			
11			
12			
13			
14			
15			

**MY TOTAL RETAIL JULY 1-SEPTEMBER 23:** \_\_\_\_\_

**MY TOTAL WHOLESALE:** \_\_\_\_\_

**STAR LEVEL:** \_\_\_\_\_

**CAREER STATUS:** \_\_\_\_\_