

GRANDVIEW LODGE*NISSWA, MN

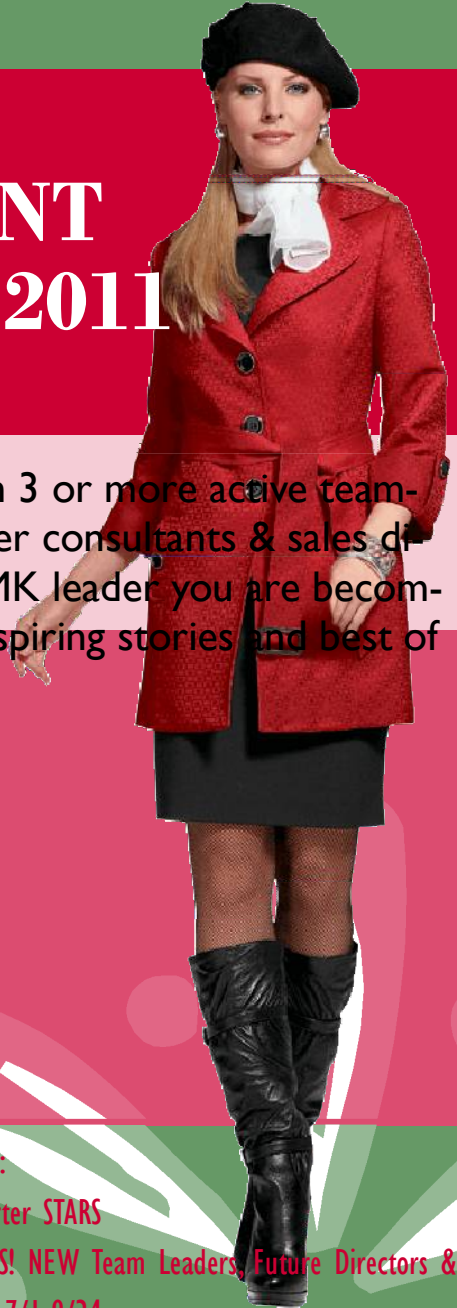
SEPTEMBER 24-25 2011

FUTURE DEGRAMMONT AREA RED ADVANCE 2011

Promote yourself to RED today with 3 or more active teammates and join your Future Area sister consultants & sales directors for a weekend honoring the MK leader you are becoming! We will have fantastic training, inspiring stories and best of all-fun!

Arrive Saturday, Sept. 24, 1pm
Depart Sunday, Sept. 25 at 12pm

Cost: \$70 prior to August 1st.
\$80 August 1-September 8
No cancellations after September 8



Special Info:

- *DIQs are invited for DIRECTOR DAY beginning at 1pm on Friday.
- *Bring a notebook, camera, pillow, beverages for yourself and a snack to share.
- *Rate includes lodging, Sat night dinner and Sunday breakfast.
- *Directions to Grandview: www.grandviewlodge.com

Recognition:

- *First Quarter STARS
- *NEW REDS! NEW Team Leaders, Future Directors & DIQs From 7/1-9/24,
- *MK Way To Grow Challenge
- *Be a Power Player: 15 faces in 2 out of 3 months-

**SEPTEMBER 8-LAST DAY TO
REGISTER FOR THE 2011
ADVANCE!**

waytoGROW
July 1 – Nov. 30, 2011

**BE A POWER PLAYER BY SEEING
15 FACES 2 OUT OF 3 MONTHS**

waytoGROW
July 1 – Nov. 30, 2011

POWER PLAYERS TRACKING FORM

DUE TO YOUR SALES DIRECTOR AT THE RETREAT

<u>Name of Customer</u>	**Use an asterisk to denote new miracle set customer!		
	<u>July - 15 Faces</u>	<u>August 15 Faces</u>	<u>September 15 Faces</u>
1			
2			
3			
4			
5			
6			
7			
8			
9			
10			
11			
12			
13			
14			
15			

MY TOTAL RETAIL JULY 1-SEPTEMBER 23: _____

MY TOTAL WHOLESALE: _____

STAR LEVEL: _____

CAREER STATUS: _____

GRANDVIEW LODGE*NISSWA, MN

FRIDAY, SEPTEMBER 23

waytoGROW
July 1 – Nov. 30, 2011

RED ADVANCE 2011

DIRECTORS DAY!

Join your sister Sales Directors and enjoy the perks of leadership at our 2011 Future Area Director's Day!

Arrive Friday, September 23 at 1pm
Consultants Arrive Saturday, September 24 at 1pm
Depart Sunday, September 25 at 12pm

Cost: \$140 per director, with \$100 due July 12 payable to Lori Peterson to secure your unit's participation. Set your goal on how many REDS you will have from your unit and start promoting right away! It's going to be GRAND!

Director's Day Agenda:

1pm Arrival and Unload
2pm Directors Meeting
4pm Break for enjoying the resort
6pm Dinner at *Cru* is a French term meaning great growth, and is used to describe an area of great harvest.

Directors Recognition:

*Way to Grow MK Corporate Challenge
*Future Area OntheGrow Challenge (directors only)
*New Car Winners
*Retail Sales from July 1-August 30

DIRECTORS AND CONSULTANTS
FEES INCLUDE LODGING &
FOOD AT GRANDVIEW!